



THE MOST ADVANCED AUTOMATION AND DATA COLLECTION SOFTWARE IN THE INDUSTRY

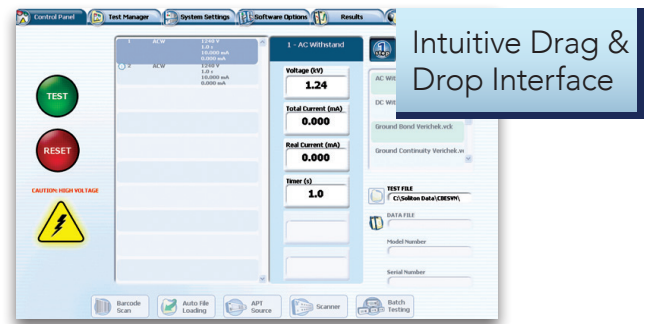
Boost Productivity with the All-New Autoware® 3 Automation & Data Capturing Software

Compatible with OMNIA® II, OMNIA®, HypotULTRA®, LINECHEK® II & SC6540

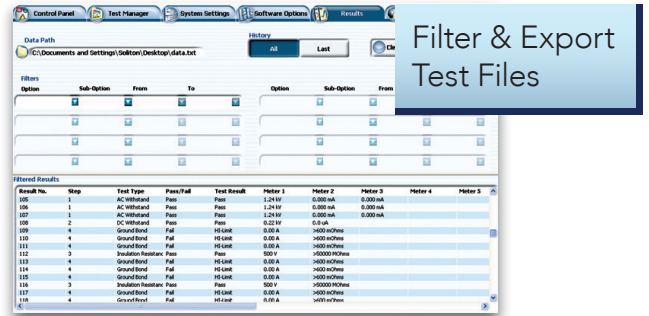
With focus on safety and productivity, Autoware® 3 revolutionizes the way electrical safety tests are performed!

Discover the Benefits for Yourself by taking **AUTOWARE® 3** For a Test Drive with a 30 Day Free Trial

SCAN FOR A FREE TRIAL



Intuitive Drag & Drop Interface



Filter & Export Test Files



Automatic Instrument Detection

FEATURES AND BENEFITS

CONCATENATED BARCODES

Easily define how the barcode is setup to differentiate between model and serial number.

COMPREHENSIVE DATA CAPTURE

Customize and filter test results from multiple workstations anywhere on your network.

VeriCHEK TEST REPORTS

Make your next audit easier by quickly printing the results of your VeriCHEK tests.

INSULATION RESISTANCE BATCH TESTING

Combined with a scanning matrix our BatchTEST® feature performs AC/DC Hipot, Continuity and Insulation Resistance tests on a batch of DUT'S at once.

DYMO & ZEBRA PRINTER SUPPORT

Label your DUT's with pass/fail information by printing directly to a Dymo or Zebra Label Printer.

RE-PRINT OLD PRINT REPORTS

We've added the capability to quickly recall and reprint old test reports.

LINE LEAKAGE AUTO FILL

Simply set up a single LLT test step and Autoware® 3 will automatically create the 7 remaining test steps.

ENHANCED SECURITY

Configure user profiles and access levels to prohibit unauthorized users from modifying test routines.

DualCHEK® PRINT REPORT FUNCTIONALITY

Print Report will show both Ground Bond & ACW/DCW results when DualCHEK® is performed.

SYSTEM REQUIREMENTS

- Microsoft Windows Xp / Vista / 7 / 8
- One Available Serial Port Or Network Connectivity (Not Needed With GPIB)
- Minimum Of 1 GB Ram
- Minimum Of 1 GB Free Disk Space
- National Instruments GPIB Interface Card (Not Needed With RS-232, USB Or Ethernet)

LABEL PRINTING REQUIREMENTS

- Demo Label Software (included with AW3 installation)
- Zebra Utilities